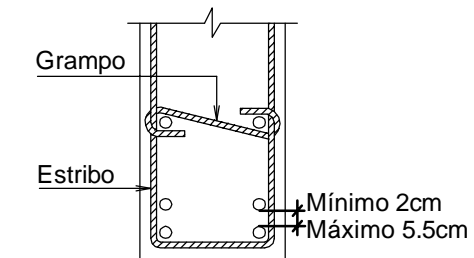
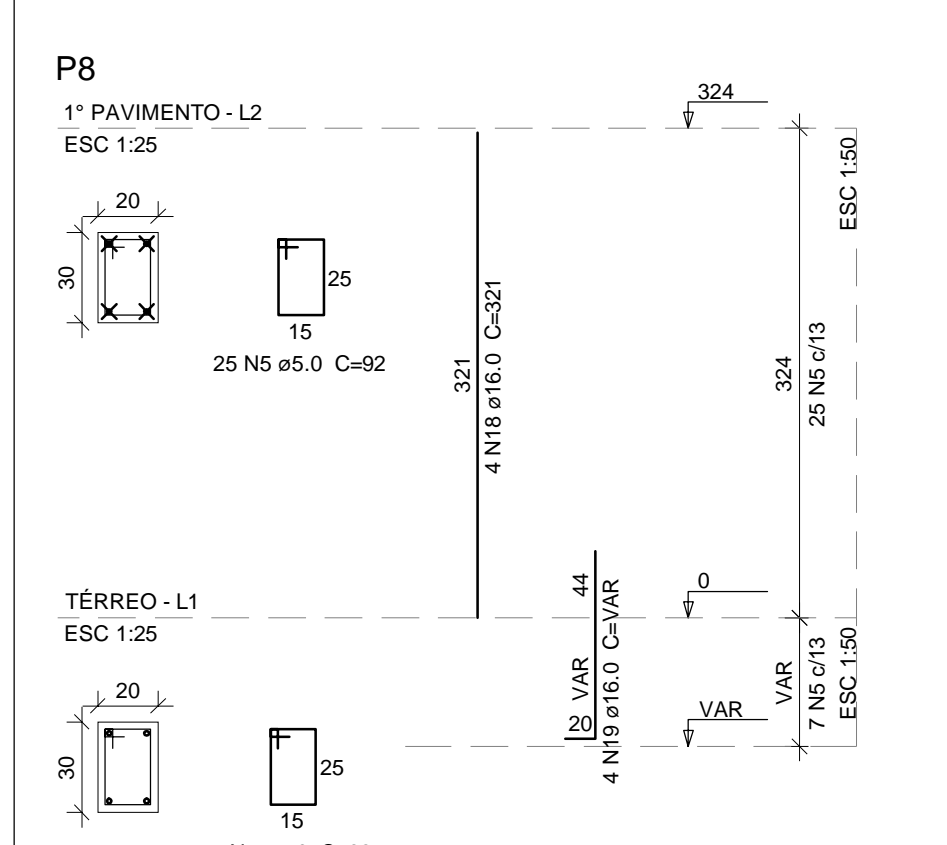
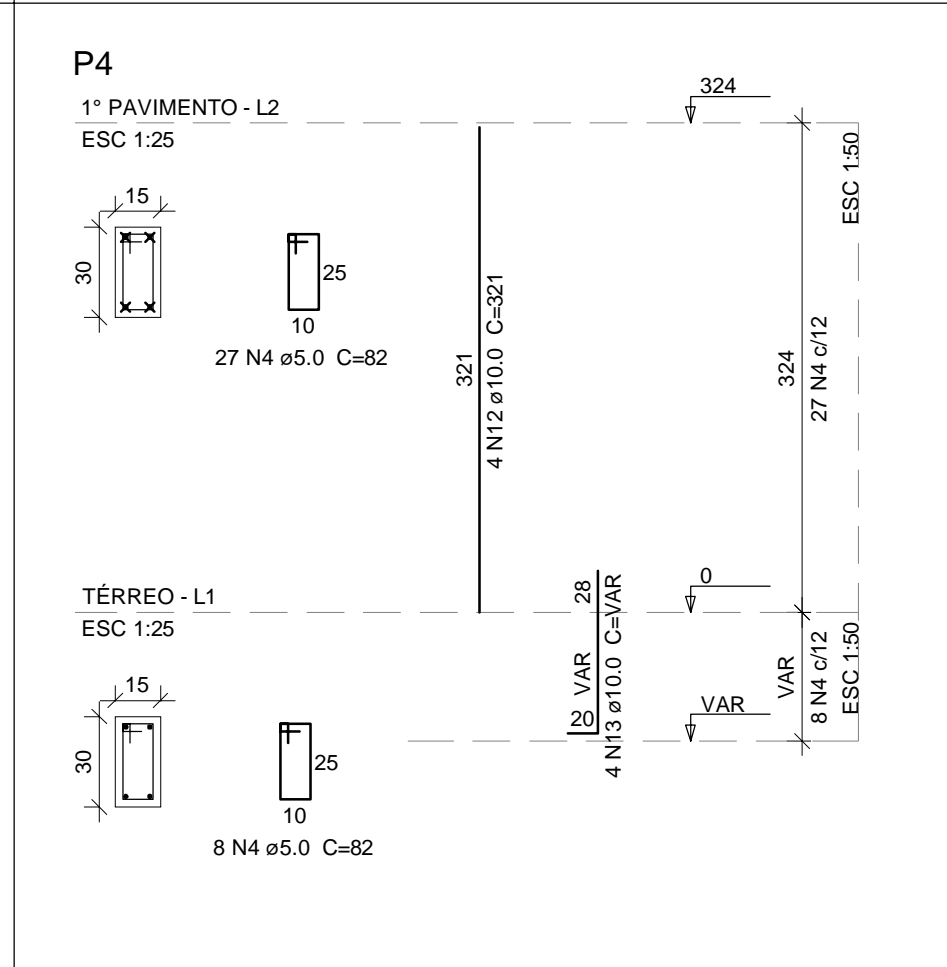
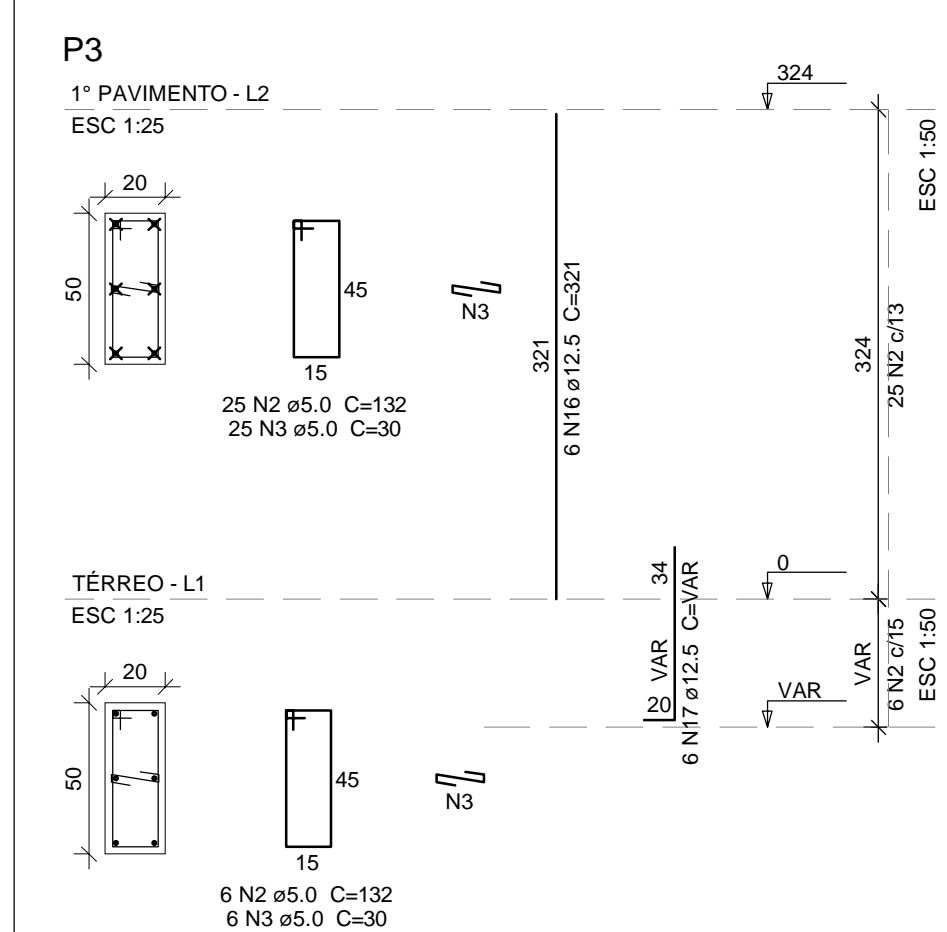
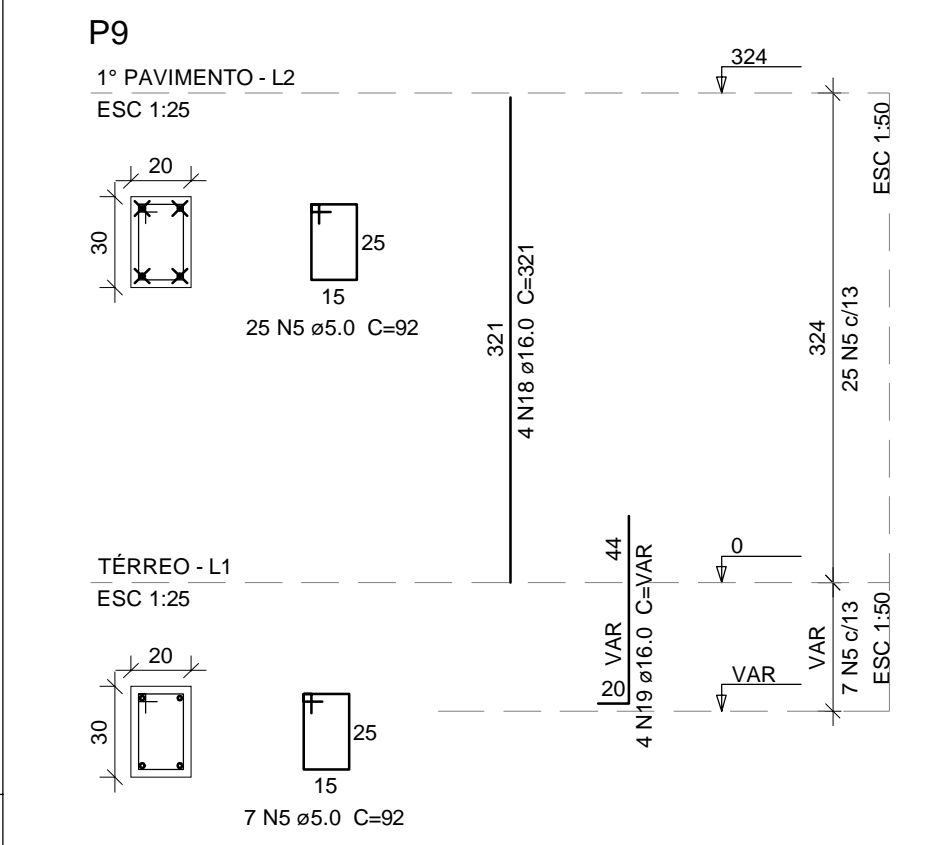
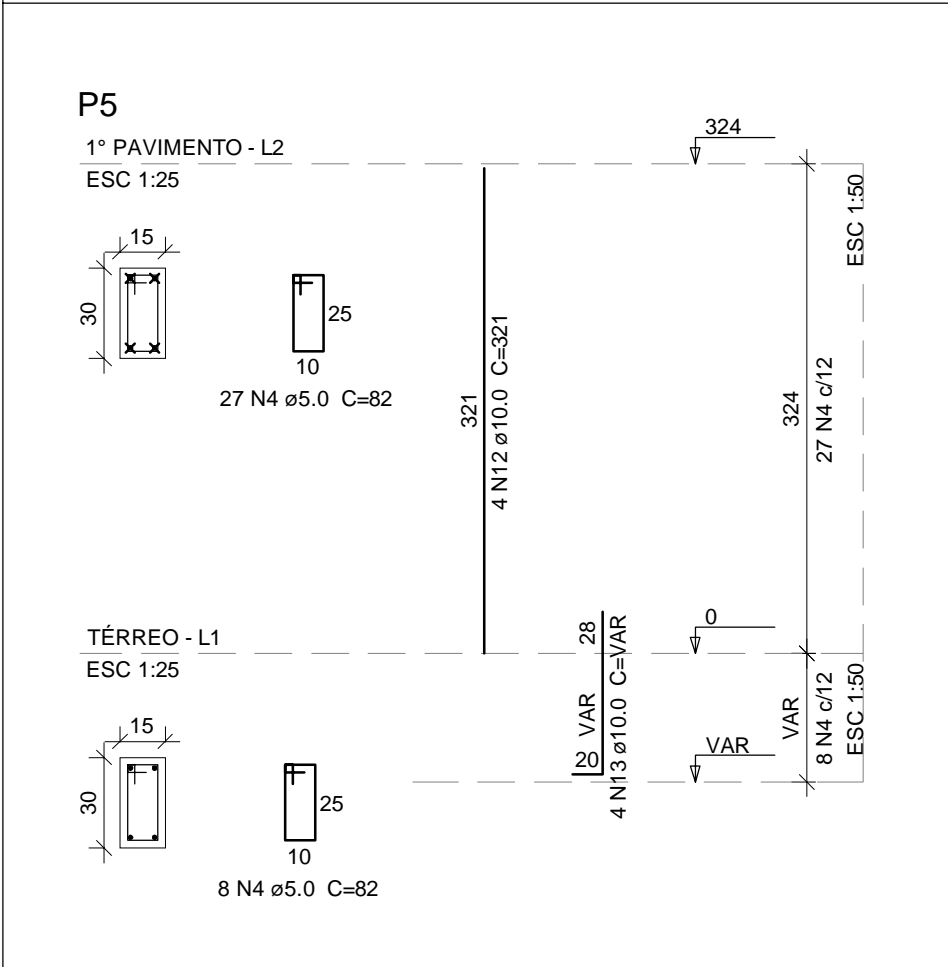
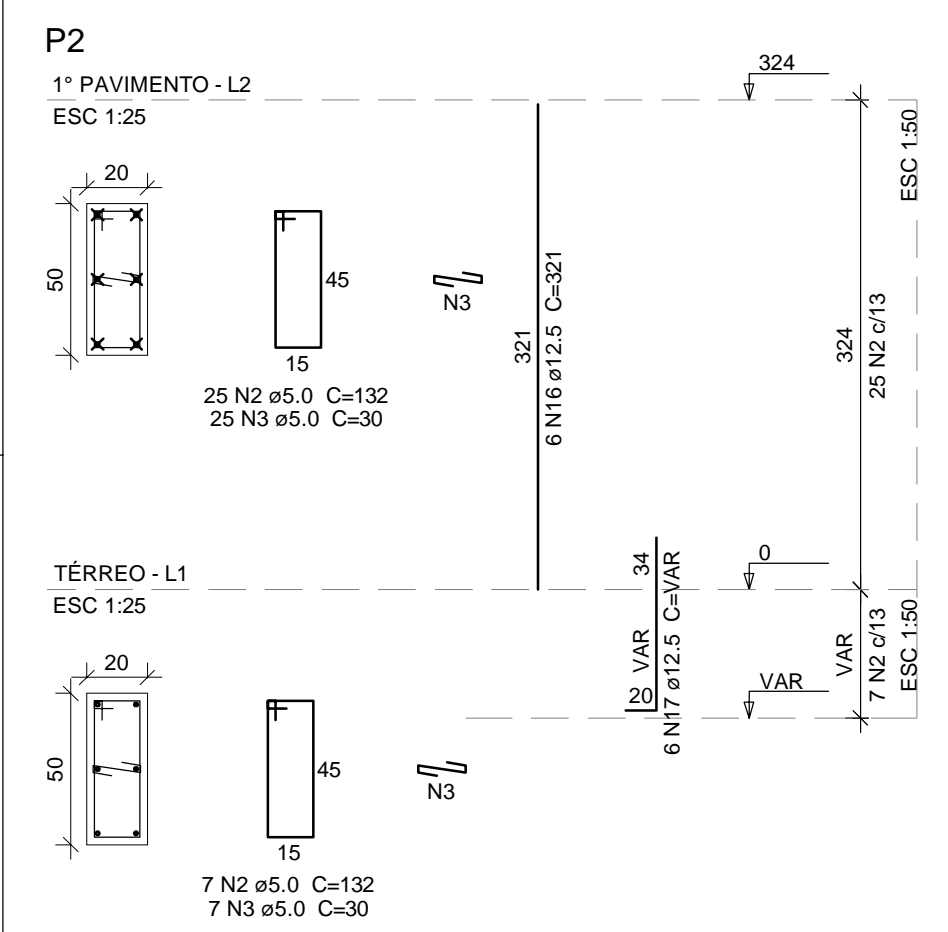


DETALHE DO GRAMPO



LEGENDA

- BARRA QUE NASCE
- BARRA QUE MORRE
- BARRA QUE SEGUE



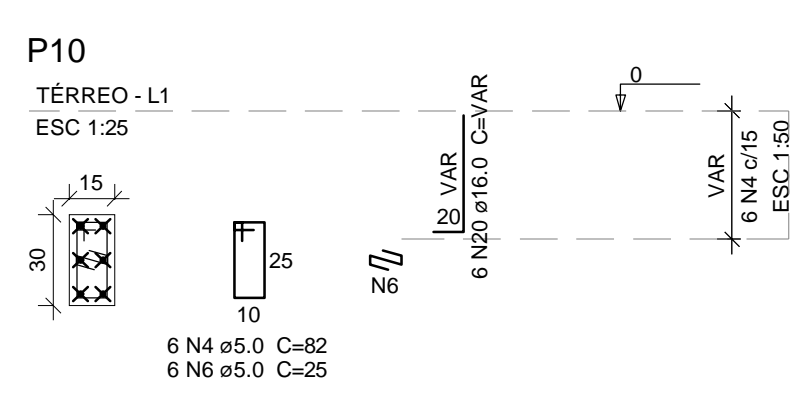
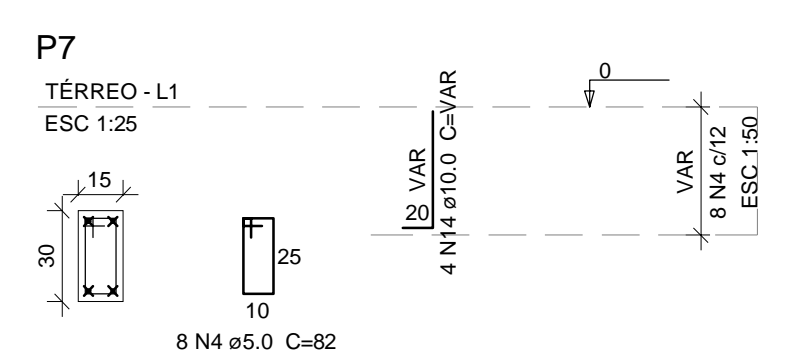
Relação do aço

AÇO	N	DIAM (mm)	QUANT	C.UNIT (cm)	C.TOTAL (cm)
CA60	1	5.0	8	92	736
	2	5.0	63	132	8316
	3	5.0	63	30	1890
	4	5.0	84	82	6888
	5	5.0	64	92	5888
CA50	6	5.0	6	25	150
	7	8.0	96	VAR	VAR
	8	8.0	192	VAR	VAR
	9	8.0	360	68	24480
	10	8.0	24	422	10128
	11	8.0	48	173	8304
	12	10.0	8	321	2568
	13	10.0	8	VAR	VAR
	14	10.0	4	VAR	VAR
	15	12.5	4	VAR	VAR
	16	12.5	12	321	3852
	17	12.5	12	VAR	VAR
	18	16.0	8	321	2568
	19	16.0	8	VAR	VAR
	20	16.0	6	VAR	VAR
	21	16.0	46	1042	47932
	22	16.0	46	VAR	VAR

Resumo do aço

AÇO	DIAM (mm)	C.TOTAL (m)	PESO + 10% (kg)
CA50	8.0	1166.4	506.3
	10.0	39.6	26.8
	12.5	58	61.5
	16.0	724.2	1257.3
CA60	5.0	238.7	40.5
PESO TOTAL (kg)			
CA50		1851.9	
CA60		40.5	

Volume de concreto (C-40) = 12.93 m³
 Área de forma = 86.3 m²



0	EMIÇÃO INICIAL	DADAM	15/03/16
REV.	DESCRIÇÃO DAS REVISÕES	RESPONSÁVEL	DATA
Obra	CAFÉ MIRANTE - GOV. CELSO RAMOS		Data
Assunto	ARMAÇÃO DOS PILARES		Folha
			2/7