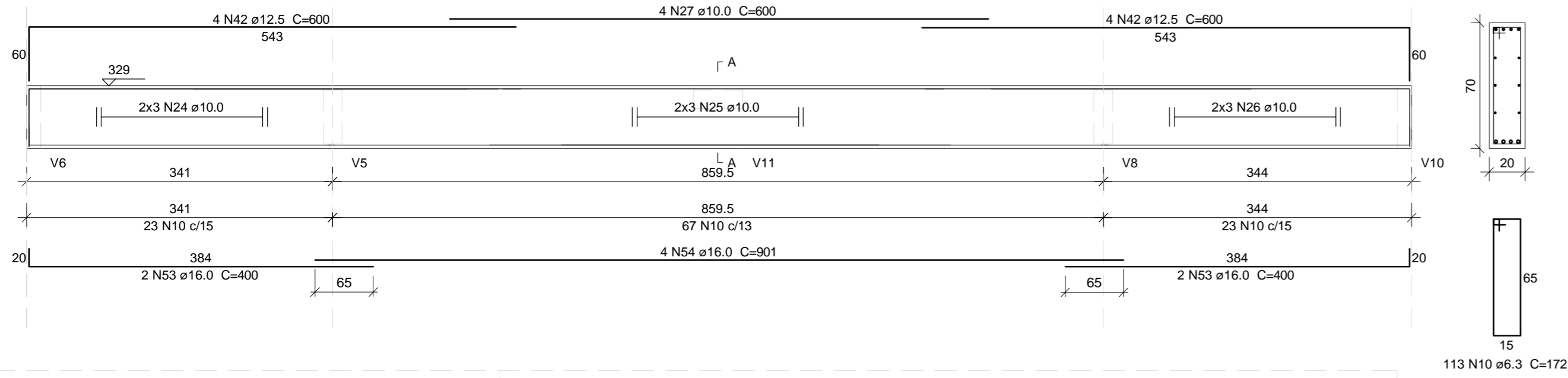


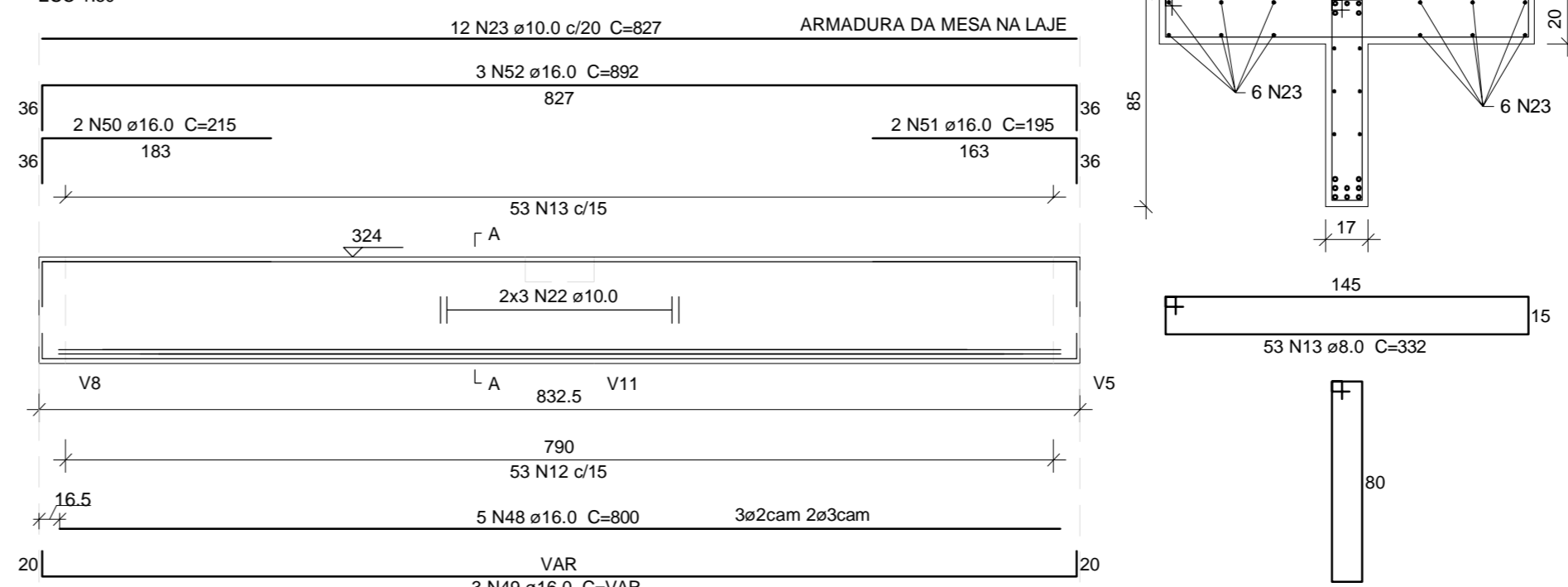
V1 (20 x 70)

VER CURVATURA NA FORMA
ESC 1:50



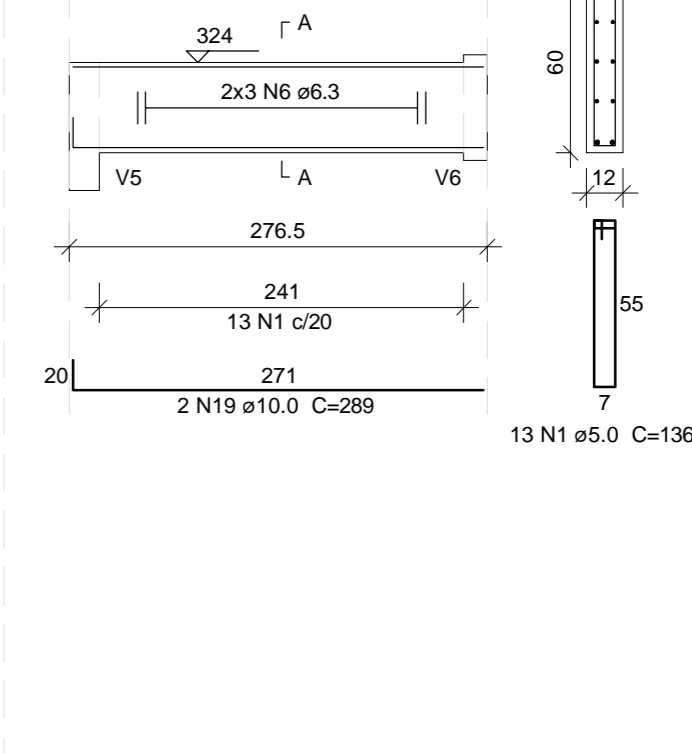
V2 (secao T 17x85x150x20)

VER CURVATURA NA FORMA
ESC 1:50



V3 (12 x 60)

ESC 1:50

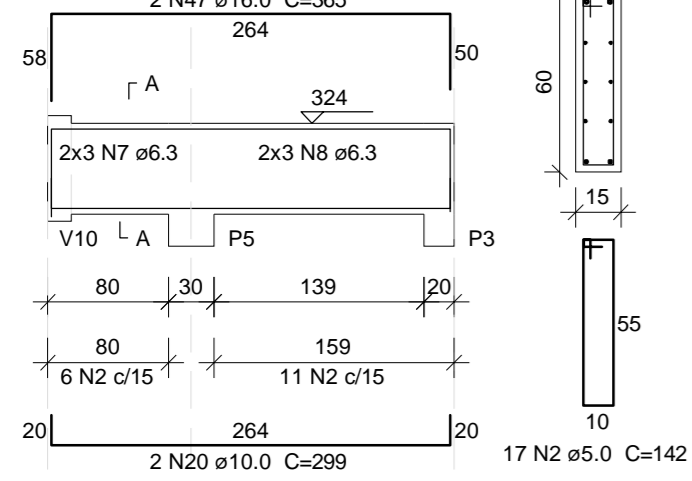


Relação do aço

AÇO	N	DIAM (mm)	QUANT	C.UNIT (cm)	C.TOTAL (cm)
CA60	1	5.0	22	136	2992
	2	5.0	17	142	2414
	3	5.0	90	176	15840
	4	5.0	1	121	121
	5	5.0	90	162	14580
CA50	6	6.3	6	CORR	1626
	7	6.3	6	CORR	630
	8	6.3	6	CORR	1104
	9	6.3	6	CORR	1242
	10	6.3	113	172	19436
	11	8.0	2	271	542
	12	8.0	53	196	10388
	13	8.0	53	332	17596
	14	8.0	62	142	8804
	15	8.0	69	202	13938
	16	8.0	37	152	5624
	17	8.0	18	248	4464
	18	8.0	12	246	2952
	19	10.0	2	289	578
	20	10.0	2	299	598
	21	10.0	4	297	828
	22	10.0	6	CORR	4962
	23	10.0	12	827	9924
	24	10.0	6	CORR	2082
	25	10.0	6	CORR	5250
	26	10.0	6	CORR	2094
	27	10.0	4	600	2400
	28	10.0	12	CORR	1992
	29	10.0	12	CORR	4512
	30	10.0	8	802	6416
	31	10.0	6	CORR	2736
	32	10.0	6	CORR	1608
	33	10.0	6	CORR	2712
	34	10.0	6	CORR	1680
	35	10.0	2	726	1452
	36	10.0	6	CORR	2658
	37	10.0	6	CORR	636
	38	10.0	4	CORR	1344
	39	10.0	6	CORR	2664
	40	10.0	6	CORR	642
	41	10.0	4	CORR	1352
	42	12.5	8	600	4800
	43	12.5	2	1039	2078
	44	12.5	2	747	1494
	45	12.5	2	382	764
	46	12.5	2	822	1644
	47	16.0	2	365	730
	48	16.0	5	800	4000
	49	16.0	3	VAR	VAR
	50	16.0	2	215	430
	51	16.0	2	195	390
	52	16.0	3	892	2676
	53	16.0	4	400	1600
	54	16.0	4	901	3604
	55	16.0	2	1118	2236
	56	16.0	6	838	5028
	57	16.0	2	600	1200
	58	16.0	2	826	1652
	59	16.0	2	567	1134
	60	16.0	2	574	1148
	61	16.0	2	392	784
	62	16.0	2	497	994
	63	16.0	4	737	2948
	64	16.0	4	953	3812
	65	16.0	2	569	1138
	66	16.0	2	591	1182
	67	16.0	2	428	856
	68	16.0	2	533	1066
	69	16.0	4	718	2872
	70	16.0	4	956	3824

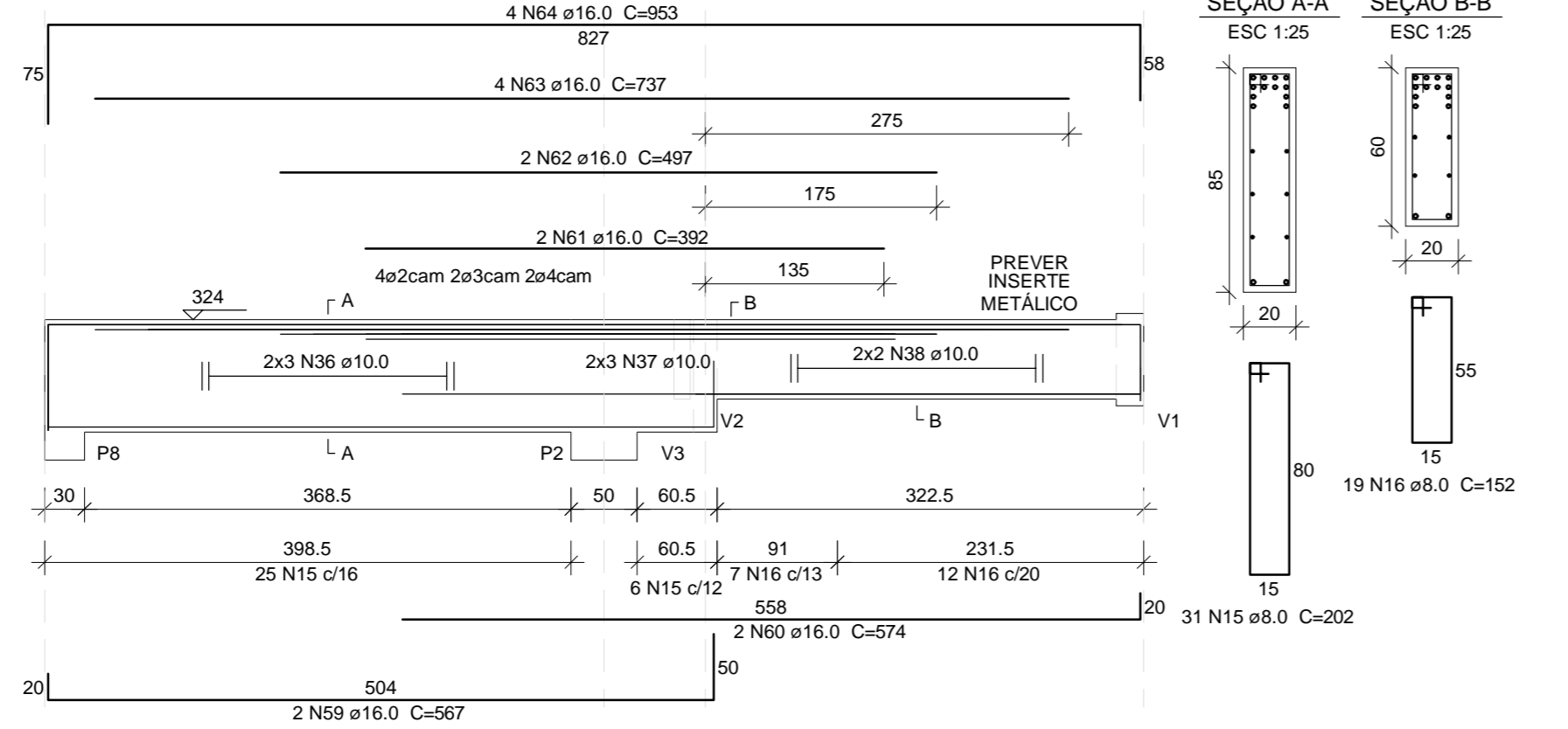
V4 (15 x 60)

ESC 1:50



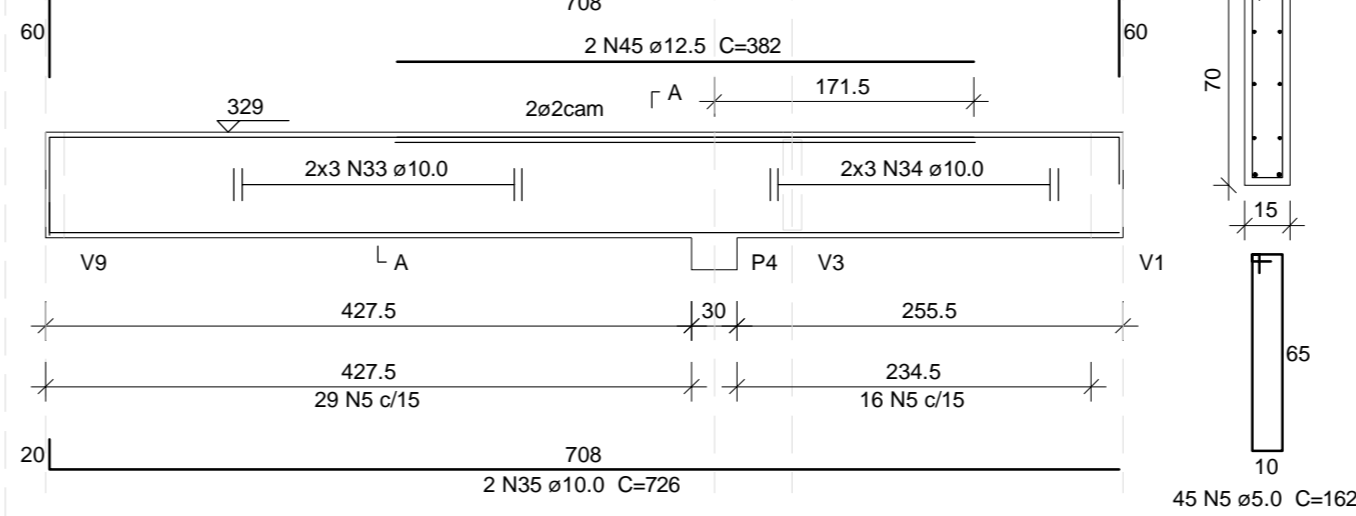
V5 (var)

VER INSERTE METÁLICO NO DETALHAMENTO DO TIRANTE
ESC 1:50



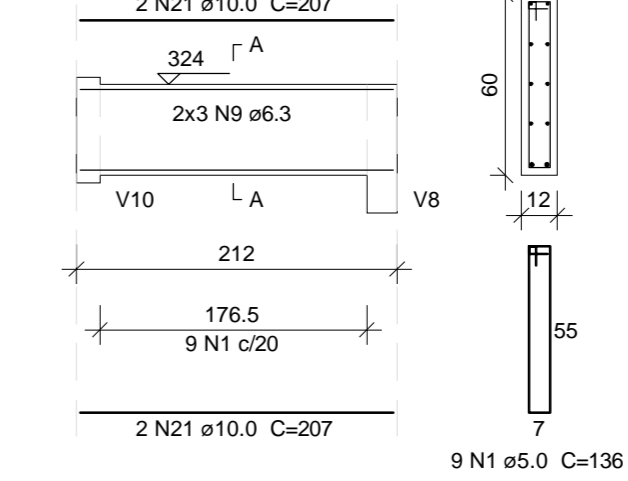
V6 (15 x 70)

ESC 1:50



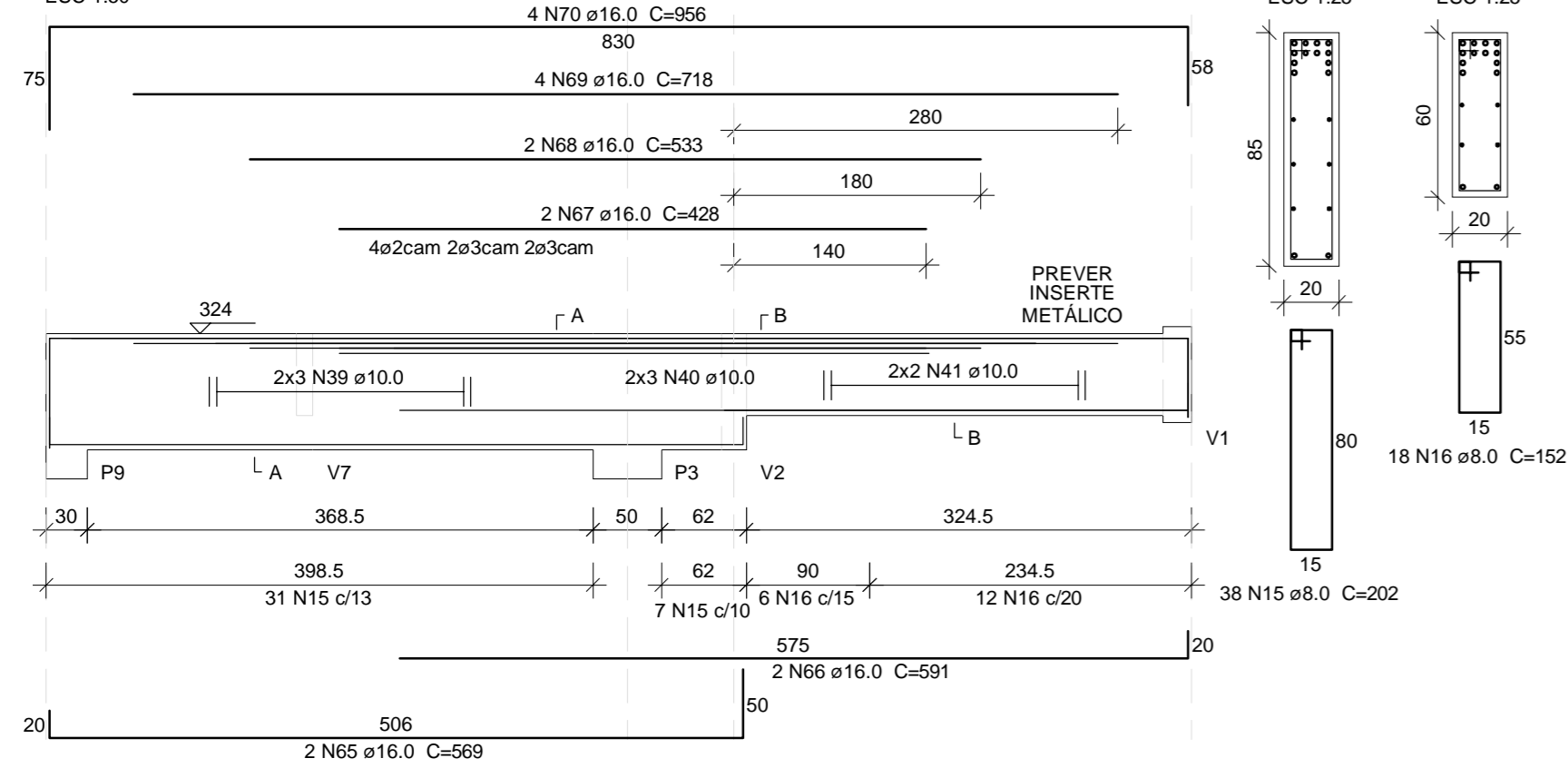
V7 (12 x 60)

ESC 1:50



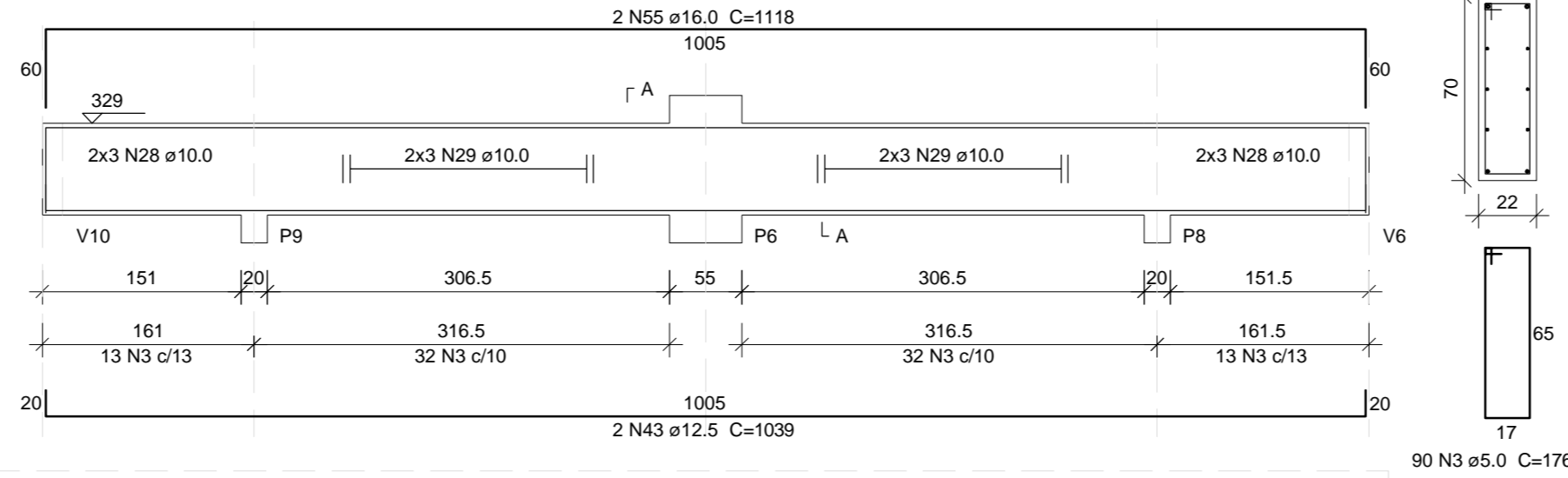
V8 (var)

VER INSERTE METÁLICO NO DETALHAMENTO DO TIRANTE
ESC 1:50



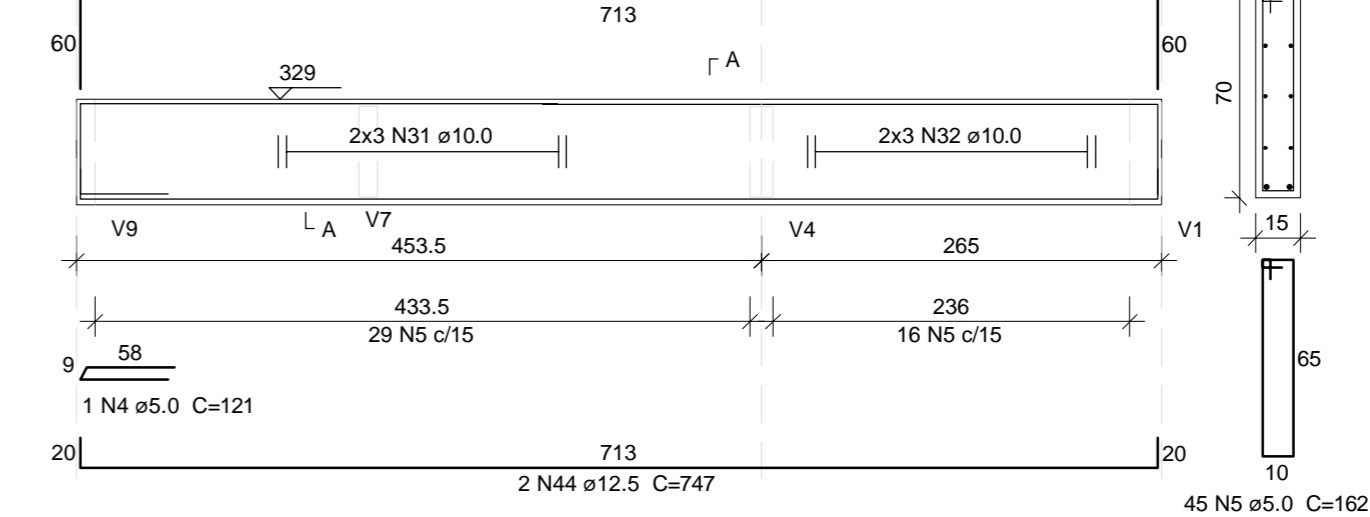
V9 (22 x 70)

VER MUDANÇA DE DIREÇÃO NA FORMA
ESC 1:50



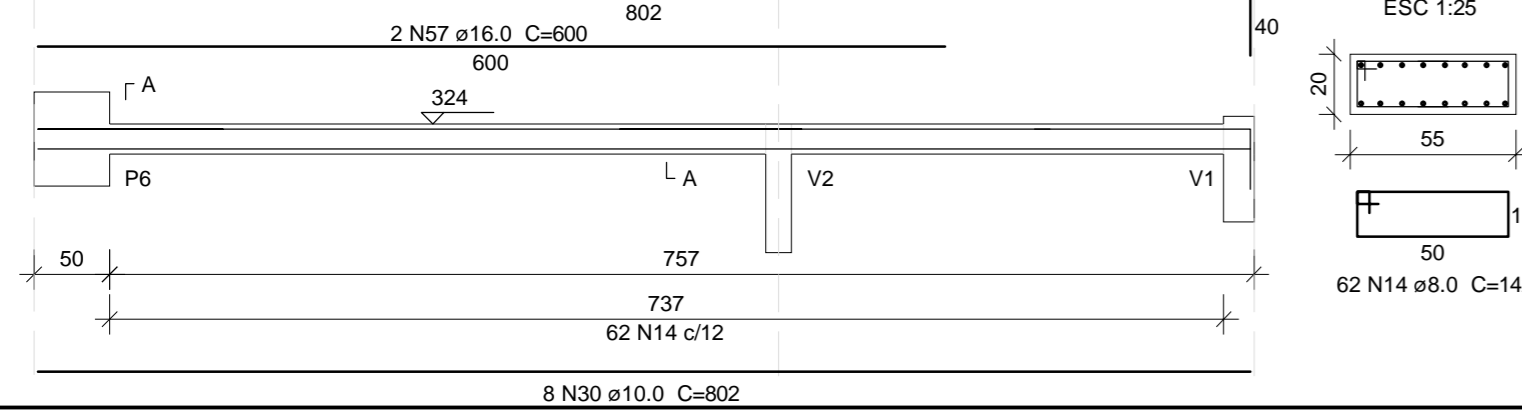
V10 (15 x 70)

ESC 1:50

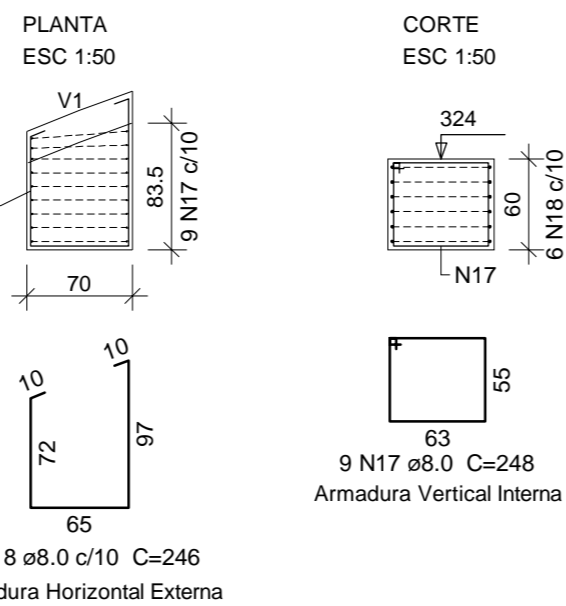


V11 (55 x 20)

ESC 1:50



B1=B2 (H=60)



Notas:

- Os Blocos B1 e B2 possuem medidas semelhantes, e por possuírem mesma quantidade de armadura, estão sendo apresentados em um único detalhamento.
- Checar medidas na forma para o corte e dobra destes blocos

DETALHE DOS GRAMPOS EM VIGAS

